



# UPDATES ON CORE TRIAL, OWENA, NIGERIA

Ogunlade, M.O. Olasupo, F.O. and Oluyole, K.A.

Cocoa Research Institute of Nigeria(CRIN), Ibadan Nigeria

## Trial site:

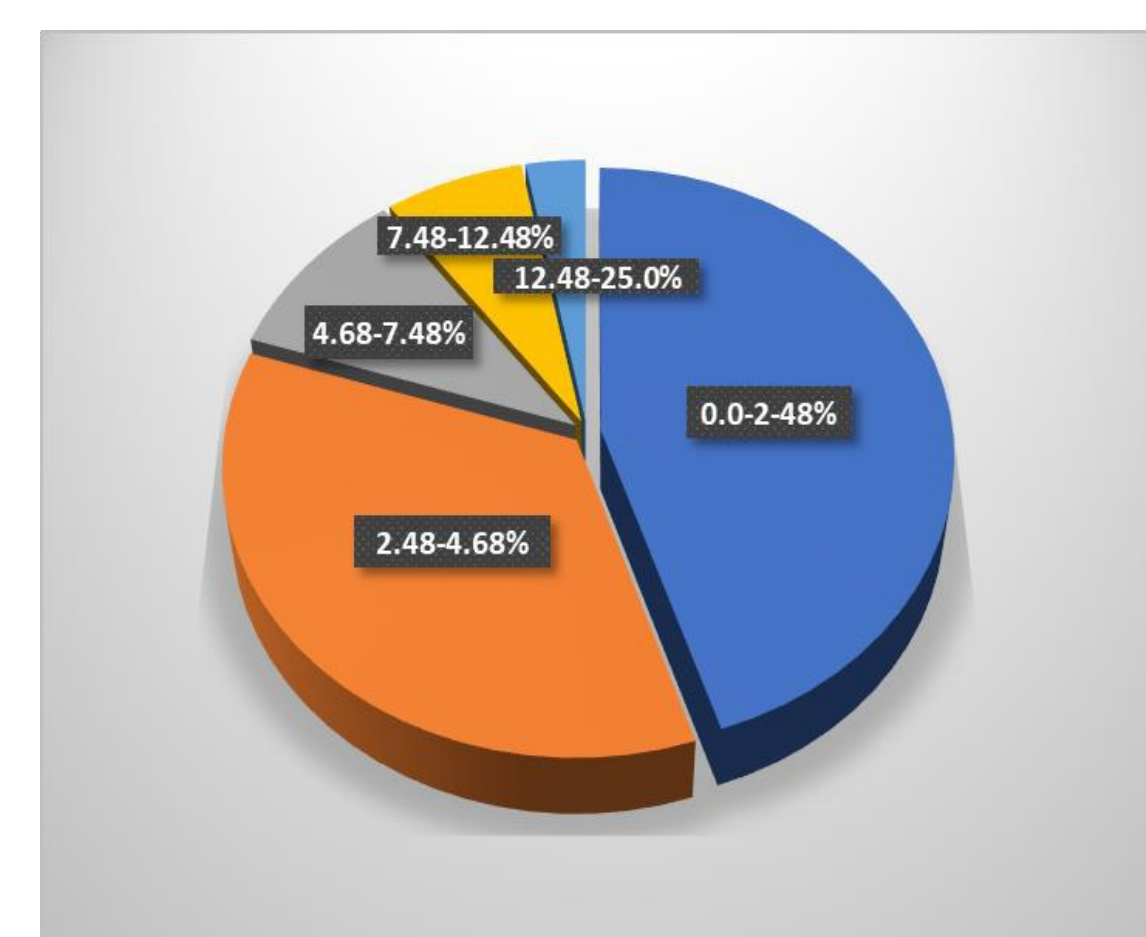
- Location : Owena, Idanre LGA, Ondo State, Nigeria
- Coordinates: Lat.07.20063°; Long. 005.02767°
- Elevation: 260m
- Land use history: Previously cropped to cocoa, abandoned and left fallow

## Activities in 2019

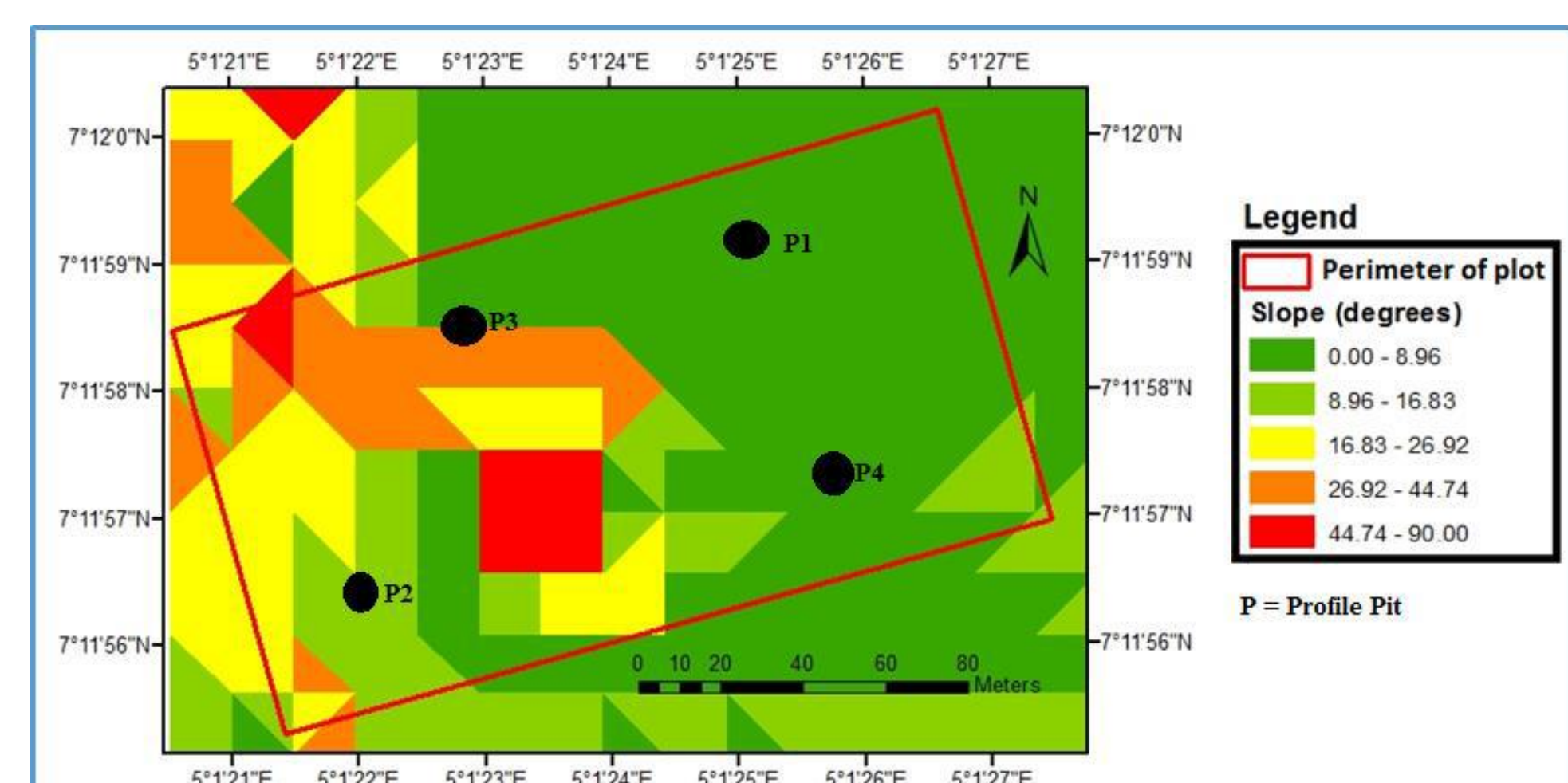
- Harvesting of maize and collection of required data on maize
- Profile digging and soil sampling
- Processing of soil samples
- Analysis of soil samples in the laboratory
- Maintenance of clonal seedlings in the nursery
- Planting of plantain suckers
- Transplanting of cocoa clonal seedlings
- Plot maintenance-weeding
- Digging of borehole
- Installation of drip irrigation facilities



Locations of Profile pits in the site



Slope distribution of the site



Elevation map of the site

## Challenges:

Borehole (water source for irrigation ) could not serve the purpose which necessitated digging another one with its cost implications

## What next:

- Continuation of irrigation of cocoa on the field in the dry season
- Collection of results of soil analysis and interpretation
- Maintenance of the plots
- Treatments application
- Data collection on cocoa and plantain
- Weather station installation



Nursery and field activities in pictures